



# Easy Street LM Mixed Zwischenrunde und Finale

Oil Per Board: 50 uL      Oil Pattern Distance: 38 Feet      Volume Oil Total: 18.7 mL      Total Boards Crossed: 374 Boards

Forward Oil Total: 7.25 mL  
 Forward Boards Crossed: 145 Boards

Reverse Oil Total: 11.45 mL  
 Reverse Boards Crossed: 229 Boards

**EASY STREET - 7938** Because of the medium distance of this pattern, it is favorable to many different styles and ball choices. Bowlers with higher rev rates can easily swing the ball and bowlers with lower rev rates can play more direct. This pattern is just like walking down EASY STREET with no worries on a nice summer day.

	Start	Stop	Loads	Speed	Crossed	Start	End	Feet	T.Oil
1	2L	2R	1	14	37	0.0	0.0	0.0	1850
2	10L	10R	3	18	63	0.0	7.6	7.6	3150
3	13L	13R	3	18	45	7.6	15.2	7.6	2250
4	2L	2R	0	18	0	15.2	24.0	8.8	0
5	2L	2R	0	22	0	24.0	33.0	9.0	0
6	2L	2R	0	30	0	33.0	38.0	5.0	0

Navigation: Forward Reverse More Info

	Start	Stop	Loads	Speed	Crossed	Start	End	Feet	T.Oil
1	2L	2R	0	30	0	38.0	33.0	-5.0	0
2	14L	14R	2	18	26	33.0	27.9	-5.1	1300
3	13L	13R	4	18	60	27.9	17.7	-10.2	3000
4	12L	12R	4	14	68	17.7	9.8	-7.9	3400
5	11L	11R	2	10	38	9.8	7.0	-2.8	1900
6	2L	2R	1	10	37	7.0	5.6	-1.4	1850
7	2L	2R	0	10	0	5.6	0.0	-5.6	0

Navigation: Forward Reverse More Info

Conditioner:  
Type In or Select One

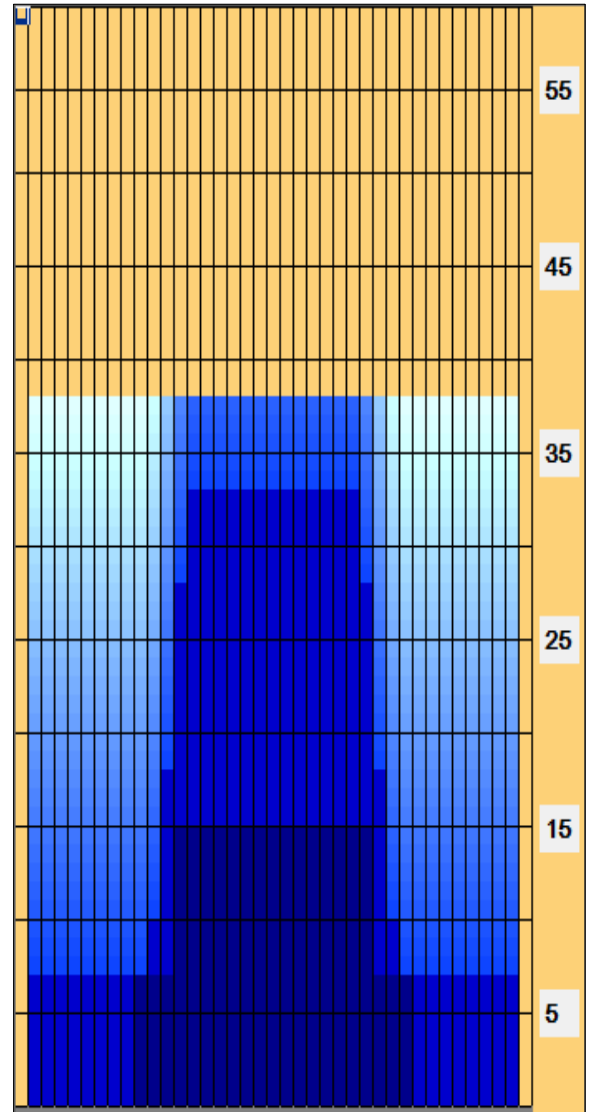
TransferType:  
Type In or Select One

Forward

Reverse

Combined

Buff



Arrow Zone Ratios

Item	2-5L:16L-20	6-10L:16-20	11-15L:16L-20	16L-20:20-16R	16L-20:20-16R	20-16R:15-11R	20-16R:10-6R	20-16R:5-2R
ul Arrow	100	130	760	1000	1000	760	130	100
Zone Ratio	10	7.69	1.32	1	1	1.32	7.69	10

Track Zone Ratios

Item	3L-7L:18L-18R	8L-12L:18L-18R	13L-17L:18L-18R	18L-18R:17R-13R	18L-18R:12R-8R	18L-18R:7R-3R
Description	Outside Track:Middle	Middle Track:Middle	Inside Track:Middle	Middle: Inside Track	Middle:Middle Track	Middle:Outside Track
Track Zone Ratio	10	3.7	1.02	1.02	3.7	10

